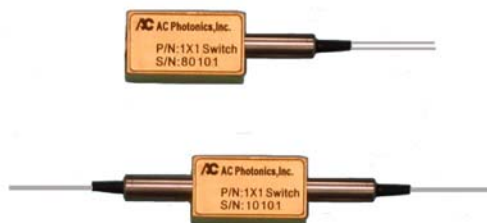




1x1 Mechanical Fiberoptic Switch



Features

- Unmatched Low Cost
- Low Insertion Loss
- Latching or Non Latching
- High Channel Isolation
- Highly Stable and Reliable
- Epoxy-Free Optical Path

Applications

- Optical Signal Routing
- Optical Network Protection/Restoration
- Configurable Optical Add/Drop
- Transmitter and Receiver Protection
- Network Test Systems
- Instrumentation

Performance Specifications

Parameter	Specification	
Operating Wavelength (nm)	1260 ~ 1360 or 1510 ~ 1610	1310/1550±40
Insertion Loss (dB) (Max.)	≤0.5(P Grade), ≤0.6(A Grade)	≤0.6(P Grade), ≤0.7(A Grade)
Wavelength Dependent Loss(WDL)(dB)	≤0.25	≤0.30
PDL (dB)	≤0.05	
Cross Talk (dB)	≥55	
Return Loss (dB)	≥55	
Switching Speed (ms)	4 (typ.)	
Drive Voltage (V)	5	
Power Handling(mW)	500	
Durability (Cycles)	10 Million	
Operating Temperature (°C)	0~70	
Storage Temperature (°C)	-40~85	
Dimensions (mm)(LxWxH)	Single port: 25x11x8; Dual port: 22.3x12.1x11	

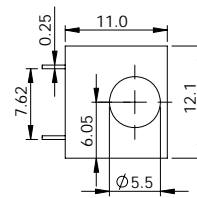
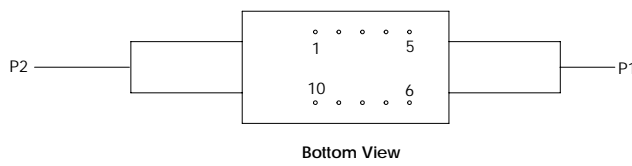
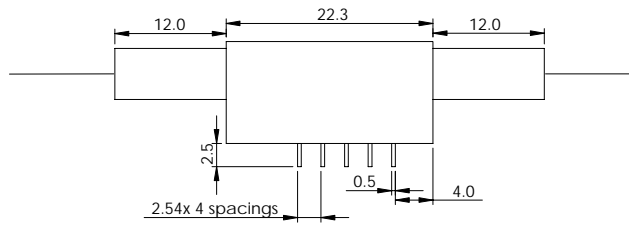
Specifications may change without notice.

Ordering Information

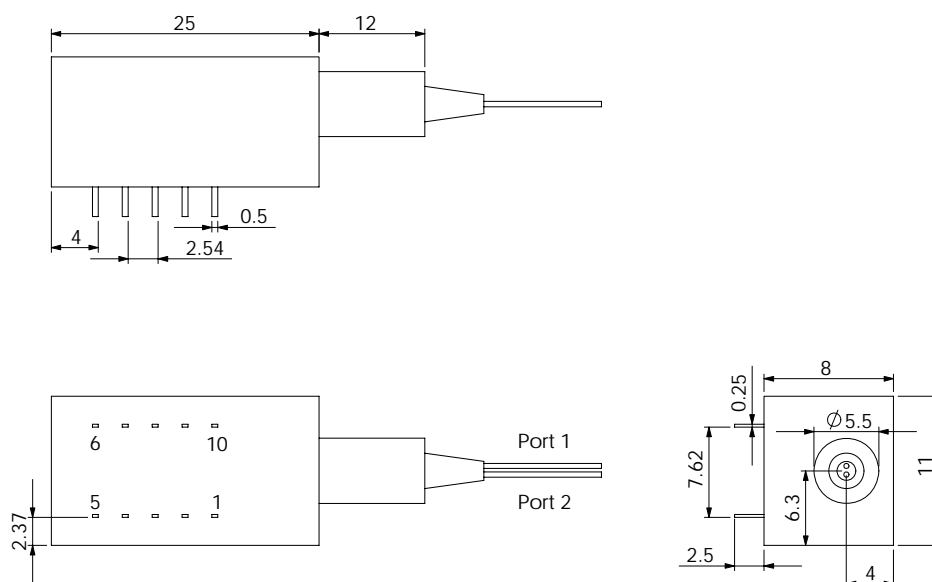
MS <input type="checkbox"/>	<input type="checkbox"/> <input type="checkbox"/>	<input type="checkbox"/> <input type="checkbox"/> <input type="checkbox"/> <input type="checkbox"/>	<input type="checkbox"/>	<input type="checkbox"/>	<input type="checkbox"/>	<input type="checkbox"/> <input type="checkbox"/>	<input type="checkbox"/>
Option	Operating Wavelength	Port	Grade	PigtailStyle	Fiber Length	In/Out Connector	
L=Latching N=Non Latching	15=1510~1610nm 13= 1260~1360nm 35=1310/1550nm	0101=1x1	P=P grade A=A grade	1=Bare Fiber 2=900umJacket	1=1 Meter 2=2 Meter	0=None 1=FC/APC 2=FC/PC 3=SC/APC 4=SC/PC 5=ST 6=LC	S=Single Port D=Dual Port



Dual Port Dimension (mm)



Single port Dimension (mm)



Bottom View

Electric Configuration

Optical Path		OFF		ON	
Electric Drive	Non-Latching	Pin1	Pin10		
	Latching	Pin1	Pin5	Pin6	Pin10
		V+	GND	GND	V+
Sensor Status	Non-Latching and Latching	Pin2-3, Pin8-9 Open		Pin2-3, Pin8-9 Close	
		Pin3-4, Pin7-8 Close		Pin3-4, Pin7-8 Open	

Parameter	Typical	Min	Max	Unit
Switch Voltage	5	4.5	5.5	V
Switch Current		≥40		mA
Pulse Duration		≥20		ms

